

**BOMBELLI GIANCARLO S.p.A.**

Capitale Soc. Euro 600.000 int. versato

Sede Amministrativa:

20015 S. Lorenzo di Parabiago (Milano - Italy)

SS. del Sempione 49/51

S 0331.55.10.25 (7 linee)

P.O. Box 88

TELEFAX 0331.55.16.72

E-Mail: [bombelli@bombelli-spa.com](mailto:bombelli@bombelli-spa.com)

E-Mail: [sales@bombelli-spa.com](mailto:sales@bombelli-spa.com)

<http://www.bombelli-spa.com>

Partita IVA IT 00765890120

R.E.A. Milano 1028058

R.E.A. Varese 157300

Codice Fiscale e Numero Iscrizione

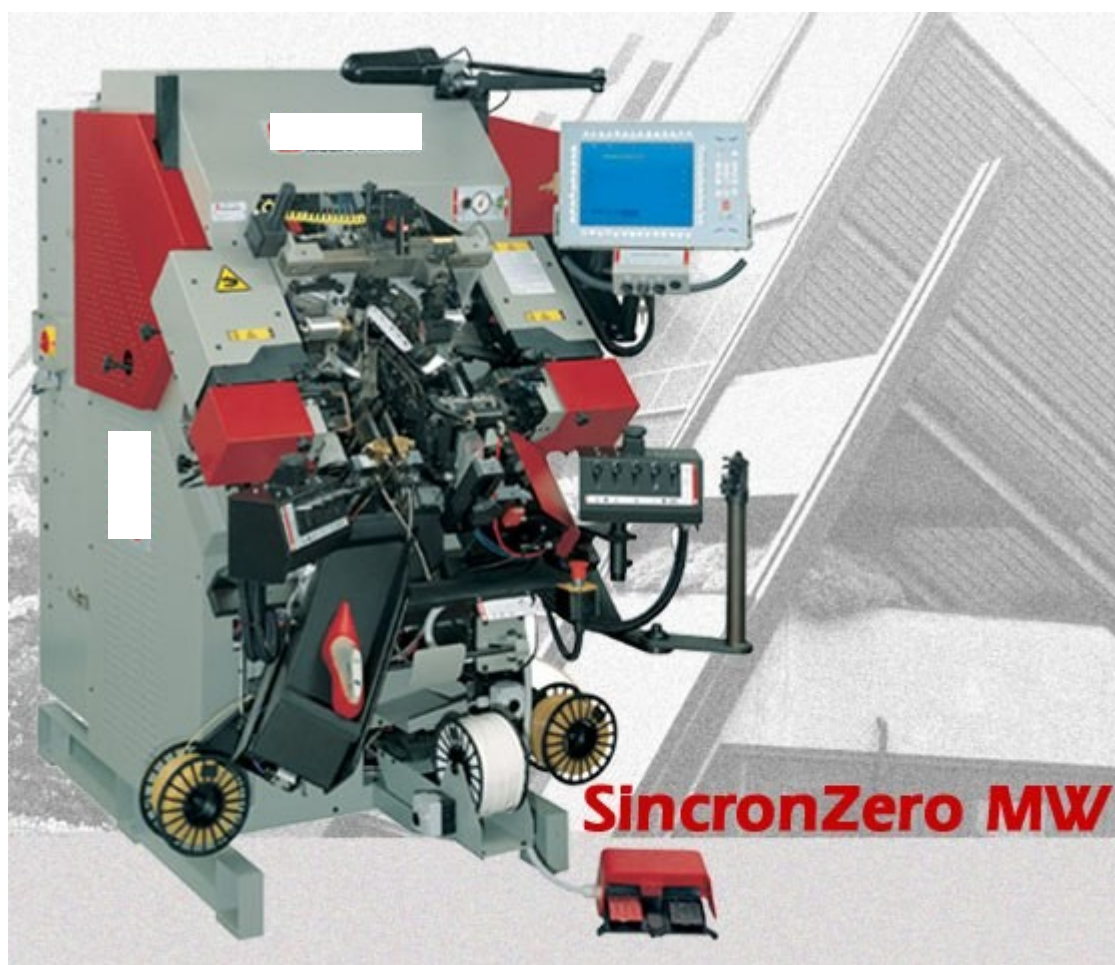
Registro Imprese di Varese 00765890120

Meccanografico Varese 028137

Sede Legale:

21052 Busto Arsizio (Varese)

Via Zappellini, 6



## Pulling over-lasting machine

# SincronZero MW

SincronZero MW the pulling-over lasting machine that allows to program infinitely, working on a 12" colour LCD, in a simple and ergonomic way:

 made in Italy 100%

- ➔ all the times and the powers that intervene in the lasting phase such as the closing pressure of the pincers and of the teflon band and the pressing;
- ➔ the wipers closing, the pincers encirclement, the position and power of the pincers pulling, the lower support pulling position and inclination, the side bands position and exclusion;
- ➔ the lasting system of the connection between ball and waist realized by the motorized side blocks which are programmable in position and pressure and independent on the right and left side;
- ➔ cement path margins with sizes grading adjustment of the injectors.

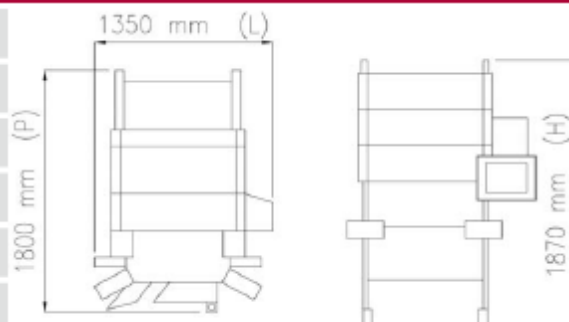
SincronZero MW, great flexibility and precision of working thanks to:

- ➔ the quick system of change of all the pincers that allows to shape quickly different types of shoes, moving swiftly from a sharp toe to a classic round toe;
- ➔ the opportunity to range, simply pressing a button, from an exclusive and patented system of cement distribution through programmable nozzles, complete from the toe to the waist to a mixed system in which the crown is used for the toe and the nozzles for the ball and waist according to the characteristics of the shoe being worked;
- ➔ the possibility to use only one injector for the toe with very sharp lasts;
- ➔ the automatic reading of the last size;
- ➔ the use of the USB technology that allows to carry out, in a few instants and in a completely autonomous way, the operations of restoring, filing, copying, transferring and updating of the data;
- ➔ the self-diagnostic.

### it can be customized

- **last blocking:** for very shaped lasts; it blocks the rear part of the last during the wipers closing;
- **motorized adjustment of the BC pincers:** change of the position of the BC pincers from the operator panel;
- **stuttering of the ABC pincers:** it is suggested for very delicate uppers, it opens and closes with a certain frequency the ABC pincers to avoid tears during the pulling;
- **programmable motorized adjustment of the teflon band:** it is useful if teflon bands with different thickness according to the last type are used;
- **rear support** with rh/lh automatic positioning and pressure compensation;
- **adjustment of the inclination of the rear support;**
- **Teflon band unit with USA side connections:** it allows the use of the teflon band USA type;
- **external tank to lubricate the wipers:** it avoids the machine stop following the opening of the cover;
- **reset through knee lever at bar and exclusion of the reset pedal;**
- **projector of red light for dark leather;**
- **wheels for machine handling;**
- **software for serial connection between SincronZero and MarkZero;** to allow to only one operator to work on both machines in a more easy way;
- **hardware key to protect programs.**

Power absorbed	2,5 kw
Air consumption	200 NI/min (30 NI/cycle)
Pressure min/max	500-1000 kPa (5-10 bar)
Sound level	Lp(A) = 74.2 dBA Peak(C) < 130 dBC Values measured according to UNI EN ISO 11202
Weight	1150 kg
Packing (in case)	1,95x1,55xh.2,05 m







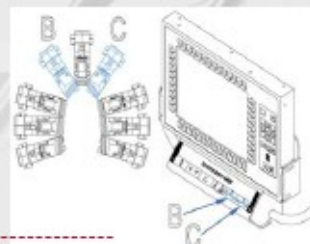
→ **mixed system of cement distribution**  
with crown for the toe and with nozzles  
for ball and waist



→ **the quick system of change of all the pincers**  
that allows a quick machine configuration



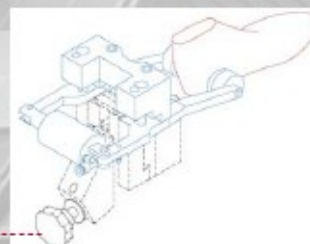
→ **particular of the mixed system**  
of cement distribution with crown  
and nozzles



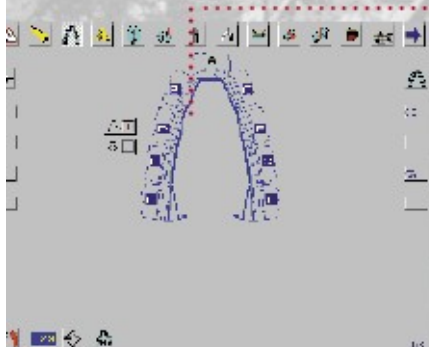
**it can be customized:**  
motorized adjustment of the BC pincers for a change  
of position, simply operating from the keyboard



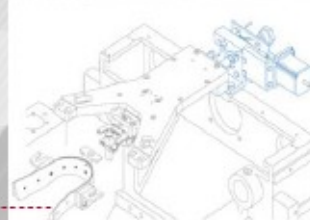
→ **cement distribution only with**  
**programmable nozzles** for the  
complete lasting of the toe and waist



**it can be customized:**  
blocking of the rear part of the last during the  
wipers closing; for very shaped lasts



→ **quick shaping of the pincers** for  
any last and model from the keyboard



**it can be customized:**  
programmable adjustment of 8 mm. of the  
working position of the teflon band

The technical informations here mentioned are purely indicative and don't bind MOLINAE Bianchi S.p.A. at all, MOLINAE Bianchi S.p.A. can make, for updatings and improvements, any type of change.